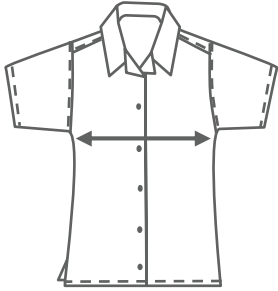


## GIRLS FORMAL WEAR

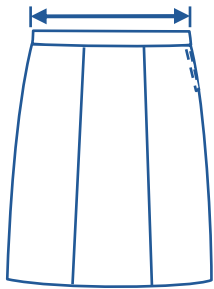


### GIRLS SCHOOL BLOUSE

1/2 Measurement (cm)	J4	J6	J8	J10	J12	J14	L8	L10	L12	L14	L16	L18	L20
Chest	37	39	41	43	45	47	49	51	53.5	56	59	61.5	64

For **Chest**, measure from seam-to-seam, 1cm down from the sleeve joint (at the armpit) while the garment is flat and relaxed.

\* Where possible, measure off a similar garment in same fabric.  
\*\* Measurements are approximate and for reference only.

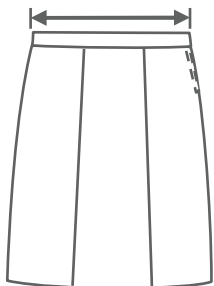


### GIRLS SKIRT - EASY-FIT WAIST

1/2 Measurement (cm)	J8	J10	J12	J14	L8	L10	L12	L14	L16	L18	L20
Relaxed Waist	27.5	29	31	33	35	37.5	39.5	42	44	46.5	48.5
Stretched Waist	32	34	36	38	40	42.5	44.5	47	49	51.5	53.5

For **Relaxed Waist**, measure from seam-to-seam on the waistband when the garment is flat and relaxed.  
For **Stretched Waist**, measure from seam-to-seam on the waistband when the waistband is stretched out fully.

\* Where possible, measure off a similar garment in same fabric.  
\*\* Measurements are approximate and for reference only.

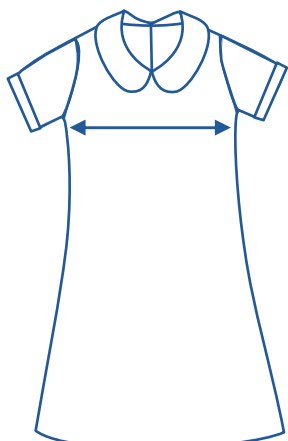


### GIRLS SKIRT - EXTERNAL BUTTON ADJUSTMENT

1/2 Measurement (cm)	J8	J10	J12	J14	L8	L10	L12	L14	L16	L18	L20
Relaxed Waist	30	32	34	36	37	39.5	42	44.5	47	49.5	52

For **Relaxed Waist**, measure from seam-to-seam at the top of the waistband when the garment is flat and relaxed.

\* Where possible, measure off a similar garment in same fabric.  
\*\* Measurements are approximate and for reference only.



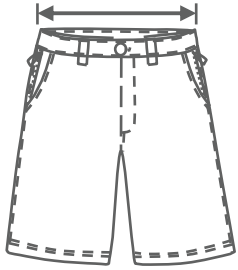
### GIRLS DRESS / PINAFORE / TUNIC

1/2 Measurement (cm)	J4	J6	J8	J10	J12	J14	L8	L10	L12	L14	L16	L18	L20
Chest	36	38.5	41	43.5	46	48.5	51	53.5	56	58.5	61	63.5	66

For **Chest**, measure from seam-to-seam, 1cm down from the sleeve joint (at the armpit) while the garment is flat and relaxed.

**PLEASE NOTE:** as all dress/tunic/pinafore designs are individual, the sizing shown above is a generic guide only and may not be the exact measurements for your school's actual garment.

\* Where possible, measure off a similar garment in same fabric.  
\*\* Measurements are approximate and for reference only.

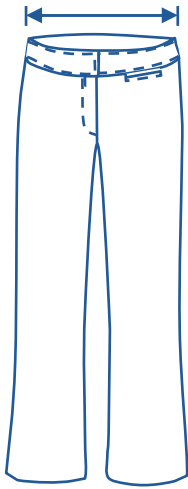


## GIRLS FORMAL SHORTS & PANTS - FITTED WAIST

1/2 Measurement (cm)	J8	J10	J12	J14	L8	L10	L12	L14	L16	L18	L20
Fitted Waist	30.5	32	34	35.5	37.5	40	42.5	45	37.5	50	52.5

For **Fitted Waist**, measure from seam-to-seam at the top of the waistband when the garment is flat and relaxed.

\* Where possible, measure off a similar garment in same fabric.  
\*\* Measurements are approximate and for reference only.



## GIRLS PANTS - FITTED WAIST

1/2 Measurement (cm)	J8	J10	J12	J14	L8	L10	L12	L14	L16	L18	L20
Relaxed Waist	30.5	32	34	35.5	37.5	40	42.5	45	47.5	50	52.5
Outer Leg Length	85	93	100	103	103	104	105	106	107	108	108

For **Relaxed Waist**, measure from seam-to-seam at the top of the waistband when the garment is flat and relaxed.

For **Outer Leg Length**, measure from the top of the waistband to the hem of the leg cuff.

\* Where possible, measure off a similar garment in same fabric.  
\*\* Measurements are approximate and for reference only.

# BOYS SCHOOL SHIRT

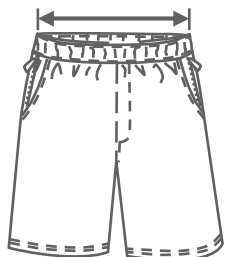


## BOYS SCHOOL SHIRT

1/2 Measurement (cm)	J4	J6	J8	J10	J12	J14	L8	L10	L12	L14	L16	L18	L20
Chest	40	42.5	45	47.5	50	52.5	55	57.5	60	62.5	65	67.5	70

For **Chest**, measure from seam-to-seam, 1cm down from the sleeve joint (at the armpit) while the garment is flat and relaxed.

\* Where possible, measure off a similar garment in same fabric.  
\*\* Measurements are approximate and for reference only.

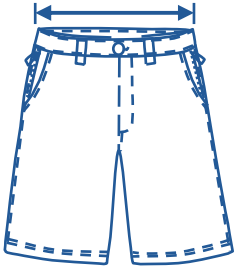


## BOYS FORMAL SHORTS - FULL ELASTIC WAIST

1/2 Measurement (cm)	J4	J6	J8	J10	J12	J14	L8	L10	L12	L14	L16	L18	L20
Relaxed Waist	24	25	26.5	28	29.5	31	32.5	34	36	38	40	42	44
Stretched Waist	36.5	39	41.5	44	46.5	49	51.5	54	56.5	59	61.5	64	66.5

For **Relaxed Waist**, measure from seam-to-seam on the waistband when the garment is flat and relaxed.  
For **Stretched Waist**, measure from seam-to-seam on the waistband when the waistband is stretched out fully.

\* Where possible, measure off a similar garment in same fabric.  
\*\* Measurements are approximate and for reference only.



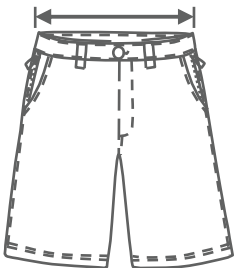
## BOYS FORMAL SHORTS - ELASTIC-BACK WAIST

1/2 Measurement (cm)	J4	J6	J8	J10	J12	J14	XS
Relaxed Waist	26	27	28	30	31	32.5	34.5
Stretched Waist	35	36.5	38	39.5	41	44	47

For **Relaxed Waist**, measure from seam-to-seam on the waistband when the garment is flat and relaxed.  
For **Stretched Waist**, measure from seam-to-seam on the waistband when the waistband is stretched out fully.

\* Where possible, measure off a similar garment in same fabric.

\*\* Measurements are approximate and for reference only.



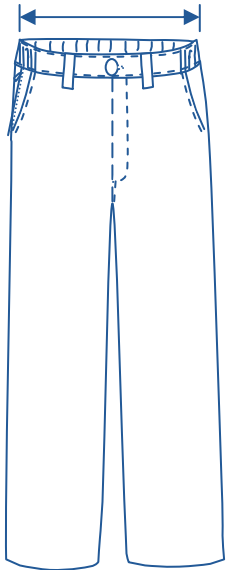
## BOYS FORMAL SHORTS - FITTED WAIST

1/2 Measurement (cm)	J8	J10	J12	J14	XS	S	M	L	XL	2XL	3XL
Fitted Waist	31	33	35	36.5	38	40.5	43.5	45.5	48	50.5	53

For **Fitted Waist**, measure from seam-to-seam on the waistband when the garment is flat and relaxed.

\* Where possible, measure off a similar garment in same fabric.

\*\* Measurements are approximate and for reference only.



## BOYS FORMAL TROUSERS - ELASTIC-BACK WAIST

1/2 Measurement (cm)	J4	J6	J8	J10	J12	J14	XS
Relaxed Waist	26	27	28	30	31	32.5	34.5
Stretched Waist	35	36.5	38	39.5	41	44	47
Outer Leg Length	69	77	85	91	98	104	106

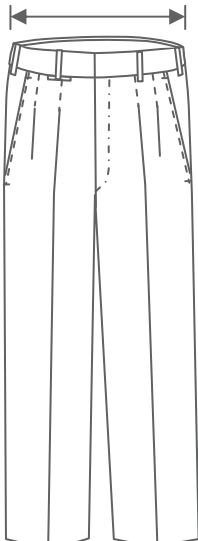
For **Relaxed Waist**, measure from seam-to-seam on the waistband when the garment is flat and relaxed.

For **Stretched Waist**, measure from seam-to-seam on the waistband when the waistband is stretched out fully.

For **Outer Leg Length**, measure from the top of the waistband to the hem of the leg cuff.

\* Where possible, measure off a similar garment in same fabric.

\*\* Measurements are approximate and for reference only.



## BOYS FORMAL TROUSERS - FITTED WAIST

1/2 Measurement (cm)	J8	J10	J12	J14	XS	S	M	L	XL	2XL	3XL
Fitted Waist	31	33	35	36.5	38	40.5	43	45.5	48	50.5	53
Outer Leg Length	85	93	100	104	106	108	110	112	114	116	118

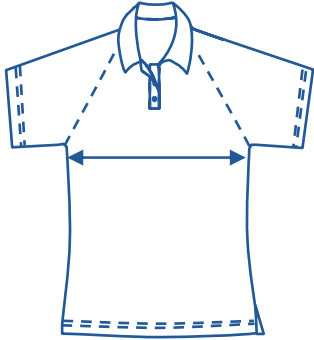
For **Relaxed Waist**, measure from seam-to-seam at the top of the waistband when the garment is flat and relaxed.

For **Outer Leg Length**, measure from the top of the waistband to the hem of the leg cuff.

\* Where possible, measure off a similar garment in same fabric.

\*\* Measurements are approximate and for reference only.

## SPORTS WEAR



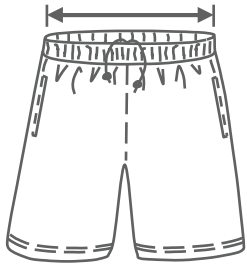
### GIRLS POLO

1/2 Measurement (cm)	J8	J10	J12	J14	L8	L10	L12	L14	L16	L18	L20
Chest	32.5	35	37.5	40	42.5	45	47.5	50	52.5	55	57.5

For **Chest**, measure from seam-to-seam, 1cm down from the sleeve joint (at the armpit) while the garment is flat and relaxed.

\* Where possible, measure off a similar garment in same fabric.

\*\* Measurements are approximate and for reference only.



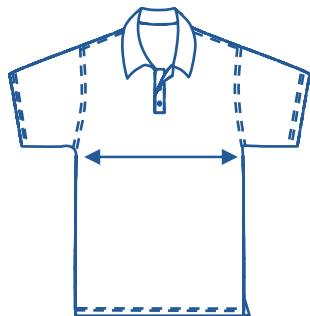
### GIRLS SPORT SHORTS

1/2 Measurement (cm)	J4	J6	J8	J10	J12	J14	L8	L10	L12	L14	L16	L18	L20
Relaxed Waist	24	26	27	28	29	30	32	34	36	38	40	42	44
Stretched Waist	37	39	41	43	44.5	45.5	48	50.5	53	55.5	58	60.5	63

For **Relaxed Waist**, measure from seam-to-seam on the waistband when the garment is flat and relaxed.  
For **Stretched Waist**, measure from seam-to-seam on the waistband when the waistband is stretched out fully.

\* Where possible, measure off a similar garment in same fabric.

\*\* Measurements are approximate and for reference only.



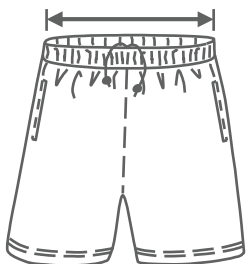
### UNISEX & BOYS POLO

1/2 Measurement (cm)	J4	J6	J8	J10	J12	J14	XS	S	M	L	XL	2XL	3XL
Chest	36	38.5	41	43.5	45.5	47.5	50	52.5	55	57.5	60	62.5	65

For **Chest**, measure from seam-to-seam, 1cm down from the sleeve joint (at the armpit) while the garment is flat and relaxed.

\* Where possible, measure off a similar garment in same fabric.

\*\* Measurements are approximate and for reference only.



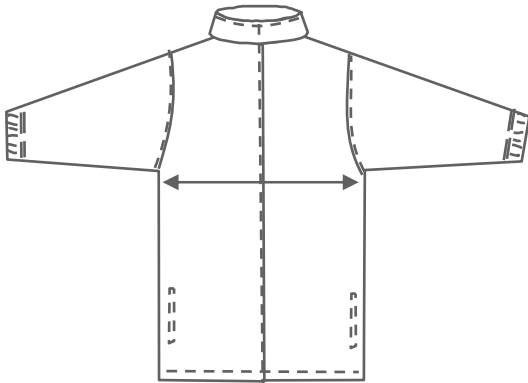
### UNISEX & BOYS SPORT SHORTS

1/2 Measurement (cm)	J4	J6	J8	J10	J12	J14	L8	L10	L12	L14	L16	L18	L20
Relaxed Waist	24	26	27.5	29	30.5	32	33.5	35.5	37.5	39.5	41.5	43.5	45.5
Stretched Waist	37	39	41	43	45	47.5	50	52.5	55	57.5	60	62.5	65

For **Relaxed Waist**, measure from seam-to-seam on the waistband when the garment is flat and relaxed.  
For **Stretched Waist**, measure from seam-to-seam on the waistband when the waistband is stretched out fully.

\* Where possible, measure off a similar garment in same fabric.

\*\* Measurements are approximate and for reference only.



## UNISEX & BOYS TRACKSUIT JACKET

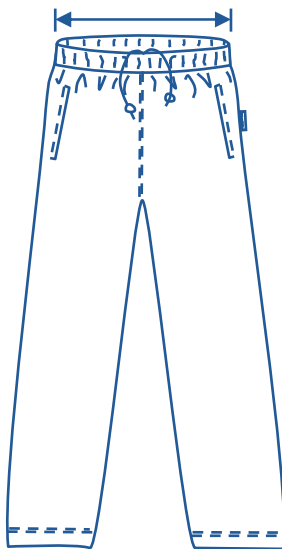
1/2 Measurement (cm)	J4	J6	J8	J10	J12	J14
Chest	44	47	50	54	57	60

1/2 Measurement (cm)	XS	S	M	L	XL	2XL	3XL
Chest	64	67	69	71	73	75	77

For **Chest**, measure from seam-to-seam, 1cm down from the sleeve joint (at the armpit) while the garment is flat and relaxed.

\* Where possible, measure off a similar garment in same fabric.

\*\* Measurements are approximate and for reference only.



## UNISEX & BOYS TRACKSUIT PANTS

1/2 Measurement (cm)	J4	J6	J8	J10	J12	J14
Relaxed Waist	24	26	27	29	31	32
Stretched Waist	39	41	43	45	47	48

1/2 Measurement (cm)	XS	S	M	L	XL	2XL	3XL
Relaxed Waist	33.5	35.5	37.5	39.5	41.5	43.5	45.5
Stretched Waist	50	62	54	56	58	60	62

For **Relaxed Waist**, measure from seam-to-seam on the waistband when the garment is flat and relaxed.

For **Stretched Waist**, measure from seam-to-seam on the waistband when the waistband is stretched out fully.

\* Where possible, measure off a similar garment in same fabric.

\*\* Measurements are approximate and for reference only.