

Victoria's Child Safe Standards

Plain language summary

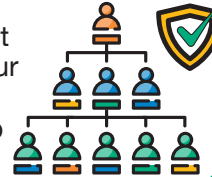
1

Your organisation welcomes Aboriginal children. You support them to express their culture and to enjoy their rights. You don't allow racism.



2

Child safety is important to everyone at all levels in your organisation. You document how you find, avoid, and stop risks of child abuse or harm.



3

Your organisation supports children to know their rights to be safe from abuse, informed, and involved. You help them to talk openly and take part in decisions that affect them.



4

Your organisation tells families and the community about what you do, and how you keep children safe from harm and abuse. You help families to have a say and to take part in decisions that affect their child.



5

Your organisation understands that every child is different and has different needs. You make sure that they can get the information and help that they need.



6

Staff know what they must do to keep children safe from abuse and harm. They record, report, and share information about child safety when they should. Staff who work with children have had the background checks they need.



7

Children and their families know how to make a complaint and what happens when a complaint is made. Your staff know how to respond properly to complaints.



8

Your organisation trains and supports staff to keep children safe from abuse and harm. Your staff know the signs of child abuse and harm and what to do if there are issues of abuse and harm.



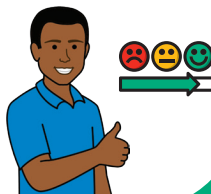
9

Your organisation makes sure children are safe when they use your services, settings, and activities. This includes when children are online.



10

Your organisation checks and improves the ways you keep children safe from abuse and harm.



11

Your organisation has written policies about how you keep children safe from abuse and harm. They are easy to understand, and all staff follow them.



For more information, contact the Commission for Children and Young People
www.ccp.vic.gov.au

